

Metal Components Incorporated



Catalog 2015



Elegant Pot Rails for Range Hoods and Other
Applications that are Stylish and Practical for all
kitchens!

Metal Components, Incorporated
www.metalcomponentsinc1.com

1-973-247-1204
1-800-233-2114

www.stainlesssteelpotracks.com
www.kitchenpotrails.com

Metal Components, Incorporated

Our Mission is to bring to the home chef the highest quality kitchen accessories made.

Stainless Steel is used in professional kitchens and is now available in our line of Pot Rail Systems.

About The Products

Metal Components, Incorporated offers decorative and functional pot rails in three collections, three materials and two finishes. Our products are machined from solid 300 series stainless steel as well as solid brass and solid copper.



The line features Pot Rails, which are available in kit form or can be purchased separately to accommodate any configuration.



ELEGANT

Pot Rails

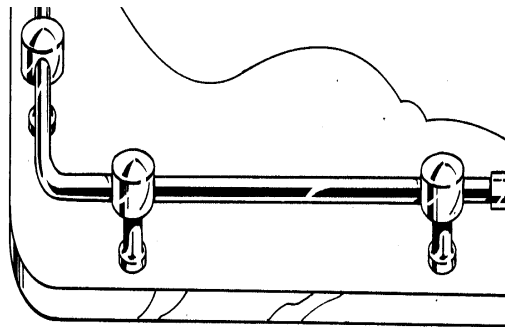
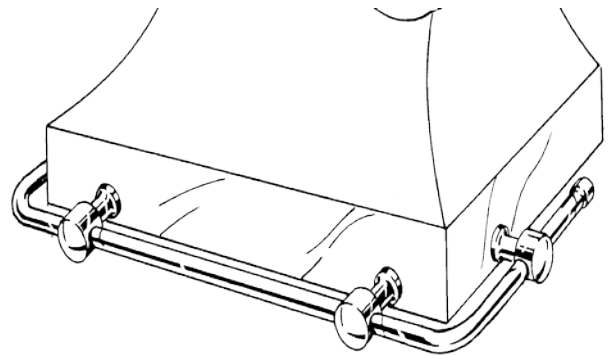
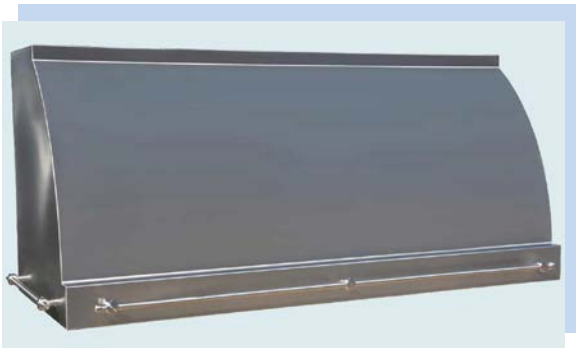
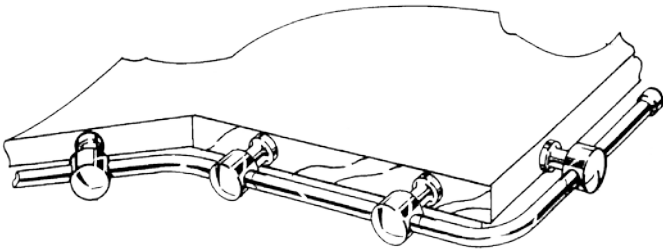


for the

GOURMET KITCHEN!

Applications

Our pot rails are designed for the gourmet kitchen; they can be mounted on range hoods, counter tops or counter edges. Pot rails can be purchased in kit form for front or side mounting. Parts can also be ordered individually for custom applications.



With our rounded edge adapter or optional mount for granite, this system is extremely versatile.

Pot Rail Kits

Pot Rail Kits are available in 30” to 72” in 6” increments (54” is not a standard) the distance from the mounting surface to front of rail is 1-5/8”. Kits can be purchased in all collections Signature, Olympia, and Harvest with a Brushed or High Polished Finish on stainless steel and a brushed finish on brass and copper (no protective lacquer is applied so brass and copper can be finished to you individual needs). All Pot Rail kits are ready to install.



Shown left to right

Olympia, High Polish Stainless Steel-Harvest Brushed Brass-Olympia Brushed Copper-Signature Brushed Stainless Steel



Kits include (2) rail posts and required hardware, (2) endplugs, and (1) straight rail cut to length.

Ordering of kits is as follows:
 Example 42” Stainless Steel Olympia Pot Rail with a brushed finish.

	Collection	Length	Material	Finish
PR	-	O	-	42
	-	S	-	B
PR = Pot Rail	SI= Signature O= Olympia H= Harvest	30” 36” 42” 48” 60” 66” 72”	S=Stainless Steel B=Brass C=Copper	B= Brushed HP= High Polished

All kits are shipped ready to install in protective packaging. 48" to 72" kits are supplied with multiple rails posts for added support.

Custom Applications

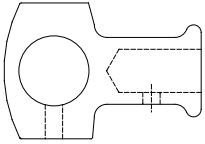
Custom rail applications are available by supplying us with the dimensions of your counter, hood or surface you intend to attach the rail to. We will custom cut the rail and supply all components necessary to complete the installation.



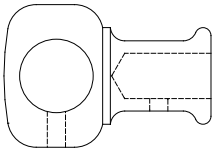
Pricing will be determined by adding all necessary component prices together and adding a custom cutting charge.

Rail Posts

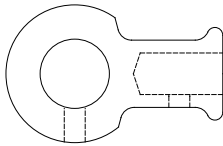
All collections of rail posts come in stainless steel, brass, and copper. Stainless steel can be ordered with a brushed or high polished finish. Brass and copper come with a brushed finish and no protective lacquer. All rail posts include a standard mount and hardware (mount options shown on next page); (1) 10-32 x 5/16" long setscrew and (1) 10-32 x 1/8" long setscrew.



Collection	Material	Finish	Part Number
Signature	Stainless Steel	Brushed	RP-125-S-B
	Stainless Steel	High Polished	RP-125-S-HP
	Brass	Brushed	RP-125-B-B
	Copper	Brushed	RP-125-C-B



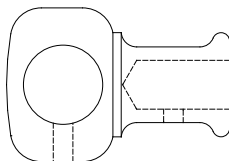
Collection	Material	Finish	Part Number
Harvest	Stainless Steel	Brushed	RP-125-S-B
	Stainless Steel	High Polished	RP-125-S-HP
	Brass	Brushed	RP-125-B-B
	Copper	Brushed	RP-125-C-B



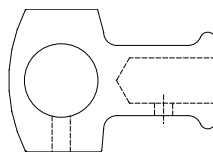
Collection	Material	Finish	Part Number
Olympia	Stainless Steel	Brushed	RP-125-S-B
	Stainless Steel	High Polished	RP-125-S-HP
	Brass	Brushed	RP-125-B-B
	Copper	Brushed	RP-125-C-B



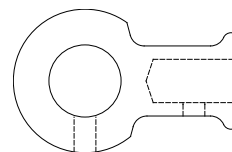
Dimensions



Harvest



Signature



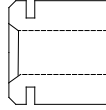
Olympia

Overall length = 1-13/16"
 Maximum outside diameter = 1-1/4"
 Centerline of rail hole to face of application = 1-5/16"

Accessories

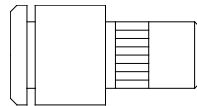
Mounts

Mounts are made of solid stainless steel; standard hood mount can be used for hood, counter top or counter edge mounting. Includes (1) o-ring, (1) 10-32 x 1" long FHMS, (1) 10-32 nut, (1) #10 lock washer and (1) #10 x 1" long sheet metal screw. For counter top or counter edge use #10 wood screw not included.



Part Number CM-38

Granite Mount should be glued and pressed into a 1/4" hole drilled 3/4" deep. Note: hole must be straight and round.



Part Number GM-38

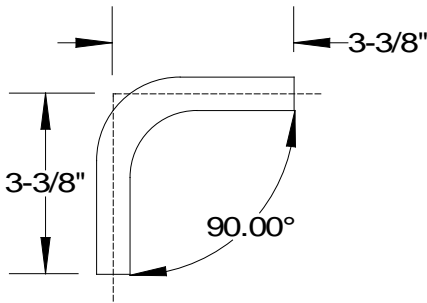
Railing and Railing Components

All rails are made of 5/8" outside diameter stainless steel, brass and copper tubing. Stainless steel rails can be ordered with a brushed or high polished finish, brass and copper come brushed only with no protective lacquer. Rails can be cut to any length up to ten feet and is sold by the linear foot.

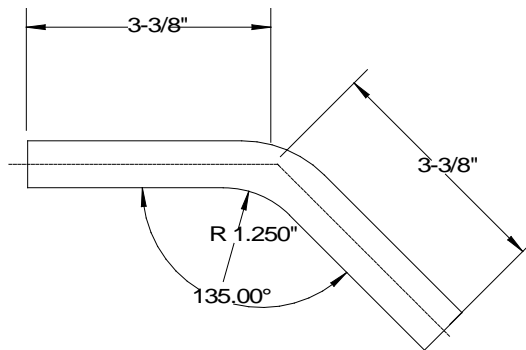


Material	Finish	Part Number
Stainless Steel	Brushed	SR-X-S-B
Stainless Steel	High Polished	SR-X-S-H
Brass	Brushed	SR-X-B-B
Copper	Brushed	SR-X-C-B

X denotes length of rail in feet



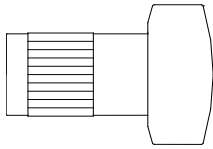
Material	Finish	Part Number
Stainless Steel	Brushed	E-90-S-B
Stainless Steel	High Polished	E-90-S-H
Brass	Brushed	E-90-B-B
Copper	Brushed	E-90-C-B



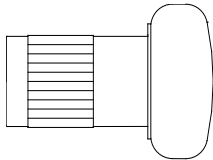
Material	Finish	Part Number
Stainless Steel	Brushed	E-135-S-B
Stainless Steel	High Polished	E-135-S-H
Brass	Brushed	E-135-B-B
Copper	Brushed	E-135-C-B

End Plugs for Railing

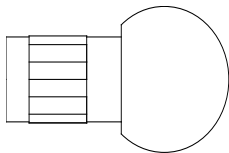
End plugs are offered in all collections and in all three materials to coordinate with railing posts. Stainless Steel is offered in brushed or high polished finish. Brass and copper are brushed finish with no protective lacquer. End plugs are designed to be press fit into rail and measure 1/2" from end of pipe to top of plug. The largest diameter of the end plugs measure 3/4".



Collection	Material	Finish	Part Number
Signature	Stainless Steel	Brushed	SI-EP-125-S-B
	Stainless Steel	High Polished	SI-EP-125-S-HP
	Brass	Brushed	SI-EP-125-B-B
	Copper	Brushed	SI-EP-125-C-B

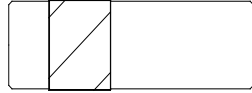


Collection	Material	Finish	Part Number
Harvest	Stainless Steel	Brushed	H-EP-125-S-B
	Stainless Steel	High Polished	H-EP-125-S-HP
	Brass	Brushed	H-EP-125-B-B
	Copper	Brushed	H-EP-125-C-B



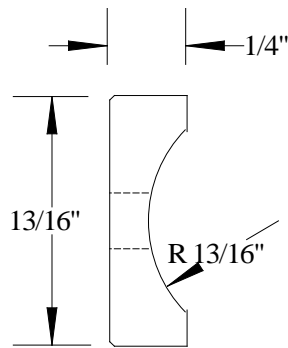
Collection	Material	Finish	Part Number
Olympia	Stainless Steel	Brushed	O-EP-125-S-B
	Stainless Steel	High Polished	O-EP-125-S-HP
	Brass	Brushed	O-EP-125-B-B
	Copper	Brushed	O-EP-125-C-B

Pot Rail Accessories

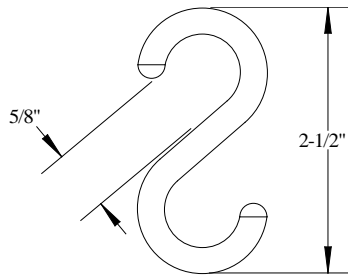


Part Number C-5

A rail connector is made to press fit into rail and is made from 6061 -T6 Aluminum. Connector is 1-1/2" long and used to connect rail to a rail or elbow.



Rounded Counter Edge Adapter



Pot Rail Utensil Hooks are offered in Stainless Steel and Copper Plated.

Custom Pot Racks

Custom 48" x 42" Stainless Steel Hanging Racks are available with Stainless Steel, Brass or Copper accent hardware, and come with six pot hooks, S Hooks for mounting and two feet of stainless steel chain.



Custom Knobs and Pulls

Custom stainless Steel, brass and copper cabinet draw pulls and cabinet knobs in three styles rounded, crescent, and angular. All knobs are 1-1/4" Diameter and Pull are 1/2" diameter and 6" in length.



Brass

Stainless Steel

And Copper

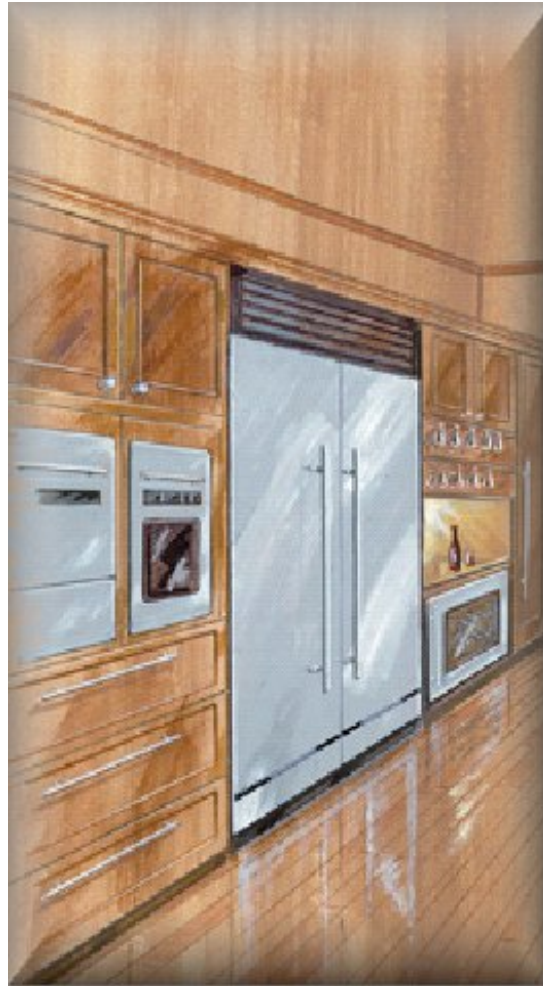


Custom Appliance Handles

Custom Appliance handles for dishwashers and refrigerators are available in solid stainless steel and brass (copper is only available with stainless steel tubing and copper trim). Handle sizes can be 24", 30", 48", 55", and 64" in length.



Rounded Style



Crescent



Angular

Pot Rail Individual Components

Item	Material		Retail
Rail Post	Stainless Steel	\$	37.38
Rail Post	Brass	\$	29.25
Rail Post	Copper	\$	39.00

Item	Material		Retail Price per Ft
Staright Rail	Stainless Steel	\$	12.19
Staright Rail	Brass	\$	10.56
Staright Rail	Copper	\$	13.81

Item	Material		Retail
90' Elbow	Stainless Steel	\$	27.63
90' Elbow	Brass	\$	29.25
90' Elbow	Copper	\$	34.13

Item	Material		Retail
135' Elbow	Stainless Steel	\$	27.63
135' Elbow	Brass	\$	29.25
135' Elbow	Copper	\$	34.13

Item	Material		Retail
Endplug	Stainless Steel	\$	13.81
Endplug	Brass	\$	13.81
Endplug	Copper	\$	16.25

Stainless Steel Pot Rail Kits

			Retail
Pot Rail Kit	30"	\$	201.50
Pot Rail Kit	36"	\$	208.00
Pot Rail Kit	42"	\$	211.25
Pot Rail Kit	48"	\$	266.25
Pot Rail Kit	60"	\$	303.88
Pot Rail Kit	66"	\$	313.63
Pot Rail Kit	72"	\$	321.75

*****There is an additional charge that applies for high polished items*****